



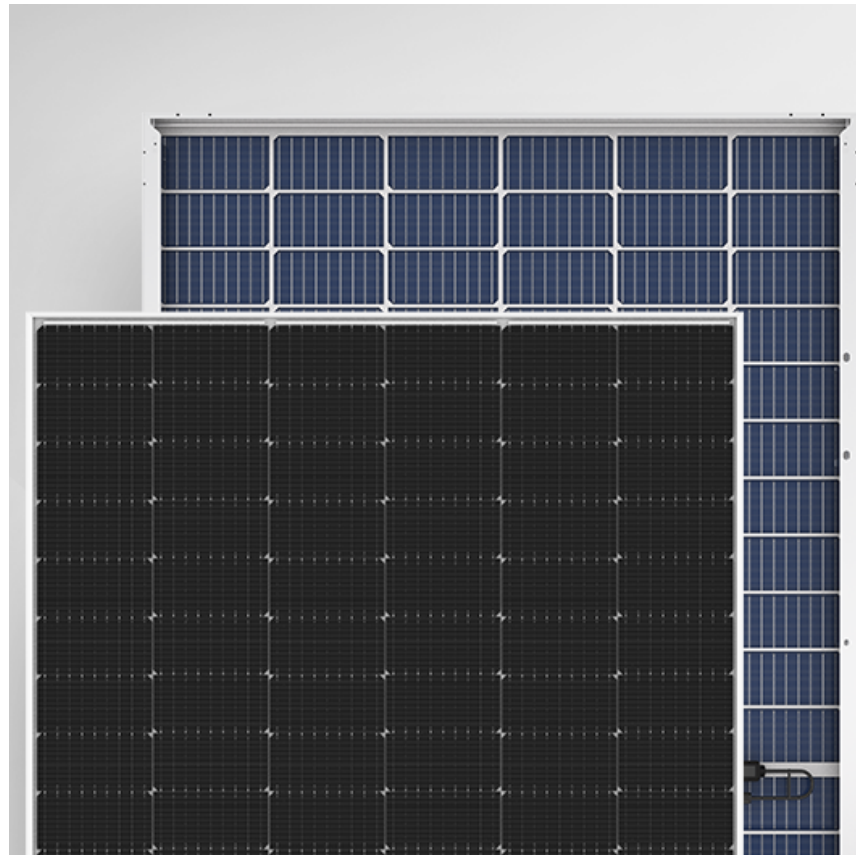
**JOG**  
International Ltd.

**LONGI** Propelling the  
transformation

## Hi-Mo 5

### LR5-72HBD 520~545M

- Based on the M10-182mm wafer, the best choice for ultra-large power plants
- Advanced module technology delivers superior module efficiency.
  - M10 Gallium-doped Wafer
  - 9-busbar Half-cut Cell
  - Smart Soldering
- Globally validated bifacial energy yield
- High module quality ensures long-term reliability



12-year Warranty for  
Materials and Processing



30-year Warranty for Extra  
Linear Power Output

Complete System and Product Certifications

IEC 61215, IEC 61730, UL 61730

ISO 9001:2008: ISO Quality Management System

ISO 14001:2004: ISO Environment Management System

TS62941: Guideline for module design qualification and  
type approval

OHSAS 18001:2007 Occupational Health and Safety

**Address:**

**Unit 2301, Bayfield Building, 99 Hennessy  
Rd, Wanchai, Hong Kong**

**Tel: +852 5803 4267**

**Email: [info@joginternational.com](mailto:info@joginternational.com)**

**Website: [www.joginternational.com](http://www.joginternational.com)**

**21.3%**  
MAX MODULE  
EFFICIENCY

**0~+5W**  
POWER  
TOLERANCE

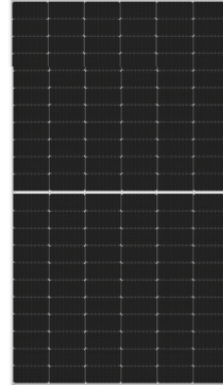
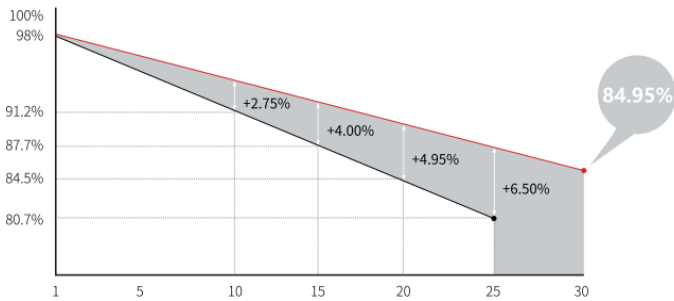
**<2%**  
FIRST YEAR POWER  
DEGRADATION

**0.45%**  
YEAR 2-30  
POWER DEGRADATION

**HALF-CELL**  
Lower operating temperature

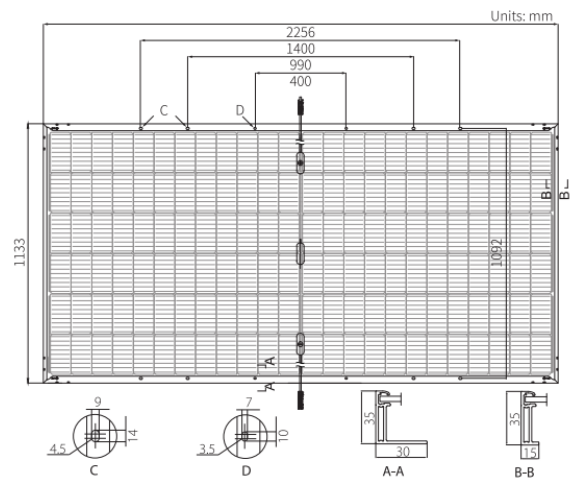
## Additional Value

### 30-Year Power Warranty



## Mechanical Parameters

Cell Orientation	144(6x24)
Junction Box	IP68, three diodes
Output Cable	4mm <sup>2</sup> , positive 400mm / negative 200mm length can be customized
Glass	Dual glass, 2.0mm coated tempered glass
Frame	Anodized aluminum alloy frame
Weight	32.3kg
Dimension	2256X1133X35mm
Packaging	31 pcs per pallet/ 155 pcs per 20' GP/ 620 pcs per 40' HC



## Electrical Characteristics

STC: AM1.5 1000W/m<sup>2</sup> 25°C Test uncertainty for P<sub>max</sub>: ±3%

Power Class	520	525	530	535	540	545
Maximum Power (P <sub>max</sub> /W)	520	525	530	535	540	545
Open Circuit Voltage (V <sub>oc</sub> /V)	48.90	49.05	49.20	49.35	49.50	49.65
Short Circuit Current (I <sub>sc</sub> /A)	13.57	13.65	13.71	13.78	13.85	13.92
Voltage at Maximum Power (V <sub>mp</sub> /V)	41.05	41.20	41.35	41.50	41.65	41.80
Current at Maximum Power (I <sub>mp</sub> /A)	12.67	12.75	12.82	12.90	12.97	13.04
Module Efficiency (%)	20.3	20.5	20.7	20.9	21.1	21.3

## Operating Parameters

Operational Temperature	-40°C ~ +85°C
Power Output Tolerance	0 ~ +5 W
V <sub>oc</sub> and I <sub>sc</sub> Tolerance	±3%
Maximum System Voltage	DC1500V (IEC/UL)
Maximum Series Fuse Rating	30A
Nominal Operating Cell Temperature	45±2°C
Protection Class	Class II
Fire Rating	UL Type 29
Bifaciality	70±5%

## Mechanical Loading

Front Side Maximum Static Loading	5400Pa
Rear Side Maximum Static Loading	2400Pa
Hailstone Test	25mm Hailstone at the speed of 23m/s

## Temperature Ratings (STC)

Temperature Coefficient of I <sub>sc</sub>	+0.050%/°C
Temperature Coefficient of V <sub>oc</sub>	-0.284%/°C
Temperature Coefficient of P <sub>max</sub>	-0.350%/°C

### Address:

Unit 2301, Bayfield Building, 99 Hennessy Rd, Wanchai, Hong Kong

Tel: +852 5803 4267

Email: [info@joginternational.com](mailto:info@joginternational.com)

Website: [www.joginternational.com](http://www.joginternational.com)

**LONGI** Propelling the transformation

**JOG**  
International Ltd.